

Graduate Education in Health for Minority Scholars (GEhMS)



Little Big Horn College Archives, original in Smithsonian Institution

The goal of GEhMS is to increase community capacity to reduce health disparities in our state, by supporting underrepresented minority (URM) graduate students in biomedical and behavioral sciences, who have strong ties to underserved Montana communities. The program supports new and continuing URM graduate students in MSU health programs by facilitating opportunities to conduct community-based participatory research on health issues in their home communities, as well as by providing academic, financial and social support.

The Graduate Education in Health for Minority Scholars is housed in MSU's Center for Biofilm Engineering, and is a collaborative effort among MSU's Colleges of Engineering; Education, Health and Human Development; Nursing; and Letters and Science; MSU's INBRE and American Indian Research Opportunities programs and various other MSU student support programs; Little Big Horn College; Chief Dull Knife College; Fort Belknap College; Fort Peck College; Salish Kootenai College; Stone Child College and the Crow Environmental Health Steering Committee. GEhMS is funded by the National Institute on Minority Health and Health Disparities, National Institutes of Health.

CONSIDERING GRADUATE SCHOOL BUT NOT SURE WHERE TO START?

If you never thought you could go to graduate school, we disagree! Come talk to us! We will discuss what graduate school involves and help you determine if it's a good fit for you. Confusing application? We will work with you through the entire application process. No funding? We can help. Once you are at MSU, we will provide support throughout your graduate program, and connect you to other minority graduate students through organizations such as the Society of American Indian Graduate Students. Worried about statistics, organic chemistry or another challenging course? We'll provide tutoring. Interested in health careers and your community? We are too.



GRADUATE EDUCATION IN HEALTH FOR MINORITY SCHOLARS (GEhMS) MONTANA STATE UNIVERSITY

To contact us and view our website:
GEhMS
c/o Center for Biofilm Engineering
366 EPS Building, P.O. Box 173980
Montana State University
Bozeman, MT 59717-3980

Phone: 406-994-3064 Fax: 406-994-6098

Email: gehms@montana.edu

Web: www.biofilm.montana.edu/gehms.html

GRADUATE EDUCATION IN HEALTH FOR
MINORITY SCHOLARS PROGRAM



MONTANA
STATE UNIVERSITY



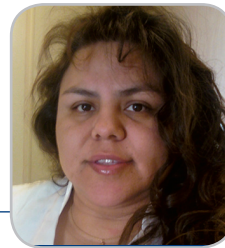
PROGRAM BENEFITS

- Mentoring through MSU's graduate school application process, including providing resources for preparing to take the Graduate Record Exam
- Competitively available stipends at \$9,000/year for Masters degree students (two years maximum) and \$14,000/year for Doctoral students (three years maximum)
- Professional development opportunities to prepare students for working successfully in their communities, including leadership development, grantwriting and grants administration
- Mini-grants for graduate research projects
- Optional research methods course sequence, including training in community-based participatory research
- Tutoring for the most challenging courses, such as statistics and organic chemistry
- Training in presentation skills and conference travel to present research results
- Referrals to other graduate scholarship opportunities and student support services
- Optional participation in the Society of American Indian Graduate Students organization at MSU and other cohort activities

ADMISSION REQUIREMENTS

Interested students must be admitted to the Division of Graduate Studies (DGE) at Montana State University (<http://www.montana.edu/wwwdg/>) and a graduate degree program related to health or biomedicine. Application to the GEhMS program is a separate process (see our website), but is contingent on successful admission to the DGE. Assistance with and mentorship through the graduate school application process is available from the GEhMS Program Coordinator. As part of the application to the GEhMS program, students will be asked to write

a one page description of their scientific interests and long-term goals and how these relate to the goals of the GEhMS program.



"For me, Montana State was a great choice. It was important for me that I had a great support system and I knew I wanted to be a part of progressive Native Health Research. I found both of these at Montana State University-Bozeman. My graduate program is challenging, but I am excited to be a part of such positive growth in the health fields for Indian country."

— Candy Felicia
graduate student
Health & Human Development
Crow, Northern Cheyenne,
Cree & Blackfoot

"The creative genius and survival skills of Native people are more than a match for the challenges of graduate school. We are powerful individually but together we can change the future of our Nations. Native Mountains and Native Minds and more."

— Lisa Lone Fight
graduate student
Land Resources Environmental Science
Mandan, Hidatsa and Sahnish



MT PBS 2010

ADVISORY COMMITTEE

ZARA BERG
Fort Peck College

JIM BURNS (Northern Cheyenne)
Native American Studies, MSU

YOSHIKO COLCLOUGH
College of Nursing, MSU

SHELLY HOGAN
McNair Scholars Program, MSU

MYRA LEFTHAND (Crow)
Crow Environmental Health Steering
Committee

RICHARD LITTLEBEAR (Northern
Cheyenne)
Chief Dull Knife College

LISA LONE FIGHT (Mandan, Hidatsa,
Sahnish)
Society of American Indian Graduate
Students, MSU

ERICA MCKEON-HANSON
Fort Belknap Community College

TWILA OLD COYOTE (Crow, Gros
Ventre)
Caring for Our Own Program, MSU

ELIZABETH RUTLEDGE
Salish Kootenai College

SHANE SANGREY (Chippewa Cree)
Stone Child College

STEVE STOWERS
College of Letters and Science, MSU

NEVA TALL BEAR (Crow)
Little Big Horn College

DAWN TARABOCHIA
College of Education, Health and Human
Development, MSU

SHEREE WATSON
American Indian Research Opportunities
Program, MSU

SARA YOUNG (Crow)
Montana INBRE and EPSCoR
Programs, MSU

• • •

